



Race Proven Products For Your Porsche!

Porsche Pedal Assembly



Pedals align just like factory setup, with full adjustability in all directions.



- Superior replacement for the factory steel pedal assembly.
- CNC-machined from 6061 alloy billet aluminum.
- 100% Bolt in to factory mounting points.
- All shafts fitted with sealed roller bearings.
- "Clockable" (32 spline) pedal shafts and adjustable pads to facilitate optimizing their position for the individual driver.
- Optimum Heel & Toe adjustability.
- Finite Element Analysis (FEA) was employed in the design to ensure maximum reliability and weight savings.
- Dual Tilton Master cylinders are fitted to the assembly with the use of Heim Joints.
- Balance bar utilized for precise front/rear braking control.
- Clutch pedal can be configured for cable or hydraulic installation.
- Emulates the exact feel of the factory setup.
- Fits model years 66-89
- Colors: Anodized Gold & Black (Red & Natural Aluminum options are available).

Starting at \$4,599

Contact Us Today!

(747) 888-9800

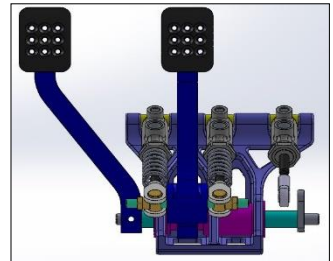
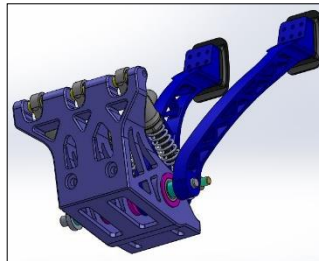
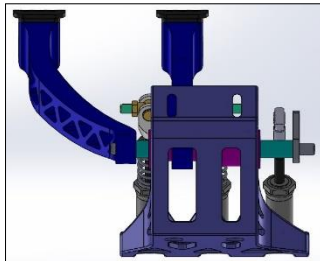
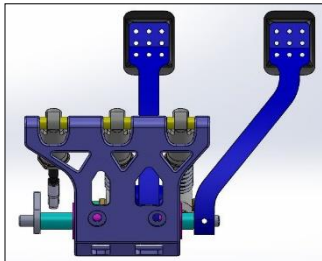
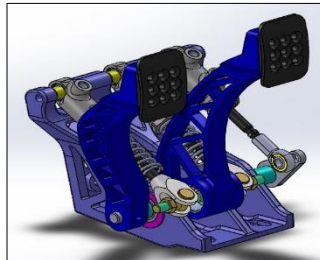
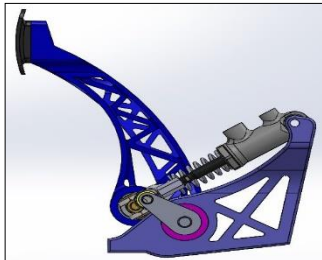
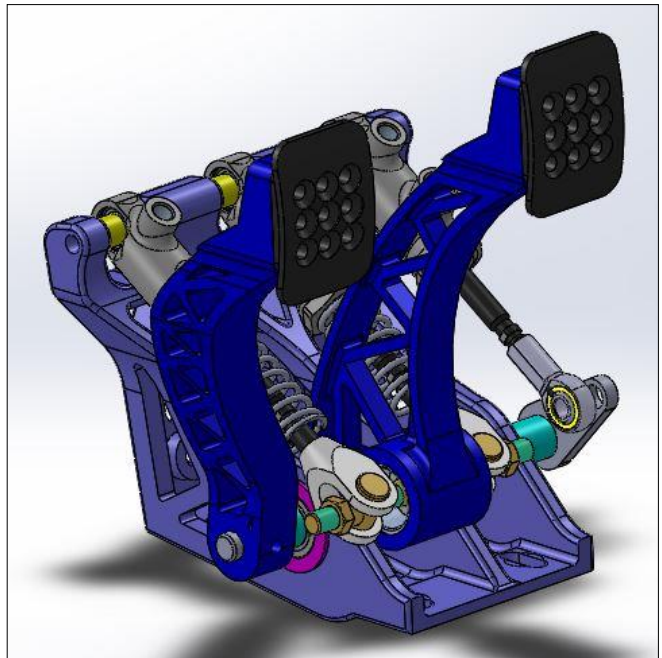
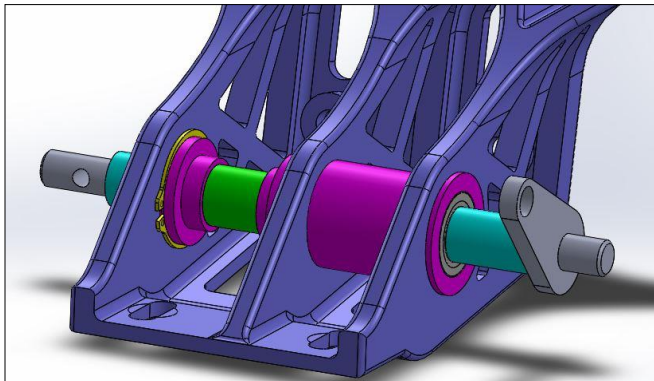


Penta Motorsports - 14399 Princeton Ave. Moorpark, CA. 93021 | 747-888-9800



Race Proven Products For Your Porsche!

Porsche Pedal Assembly



(747) 888-9800



Penta Motorsports - 14399 Princeton Ave. Moorpark, CA. 93021 | 747-888-9800